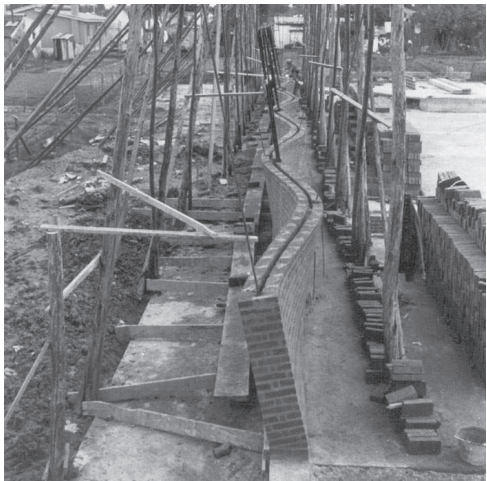


# Pre-Computer Techniques



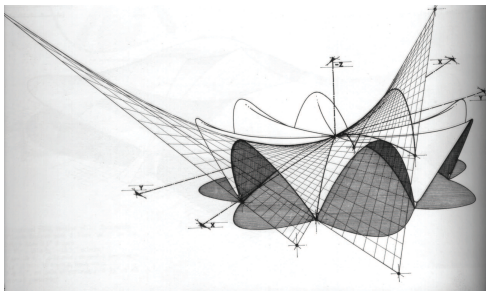
Cristo Obrero Church, Eladio Dieste  
Designed in 1950 built in 1956



Project during construction



Restaurant at Xochimilco, Felix Candela  
built in 1958

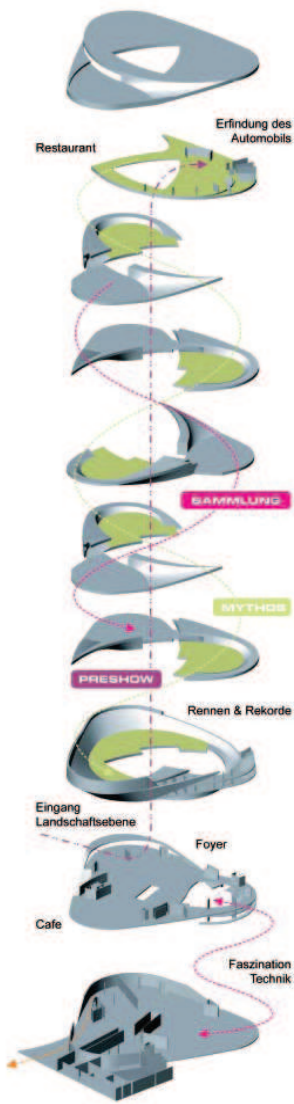


Drawing showing the straight tangents at every point within the envelope.

# Post - 1990



Mercedes-Benz Welt, UN Studio  
Opened in 2006



Tempodrom, GMP Architects  
Built in 2000 - 2001