



ÉCOLE POLYTECHNIQUE
FÉDÉRALE DE LAUSANNE

RATP Project - Urba Case Study -

Prof. Alain Wegmann

Solutions for business and IT alignment

<http://lams.epfl.ch>

phone: +41 (0) 21 693 4381

alain.wegmann@epfl.ch

<http://lams.epfl.ch/wegmann>

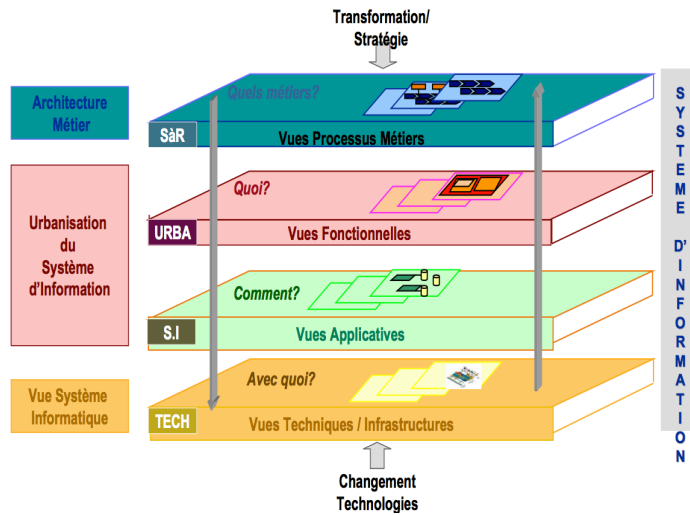
1

RATP

- 12'000 km2 served
- 15% of French population
- 14 metro lines http://www.ratp.fr/en/ratp/c_5007/presentation/
- 300 bus lines
- two regional trains
- 2 airports
- Operate in 11 other countries
- 50K employee
- 20% employee in maintenance
- 2% employee in IT (half in IT department)

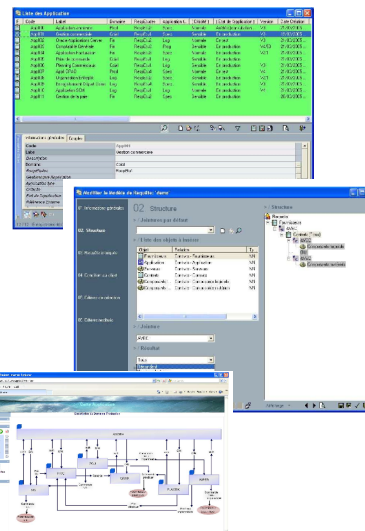
2

Urba Model



3

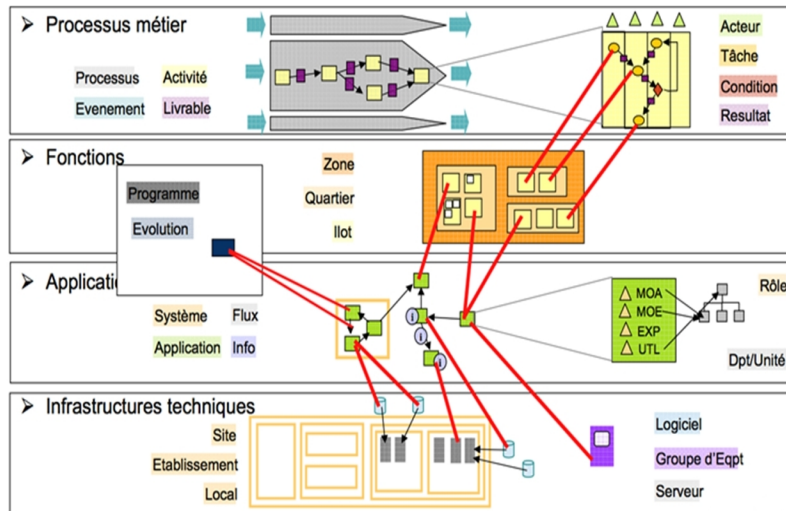
Method / Tools



http://www.abplussoftware.fr/download_fichier/PrincipalesFonctionsSOBase_V4.2.pdf

4

Urba Model – RATP Version



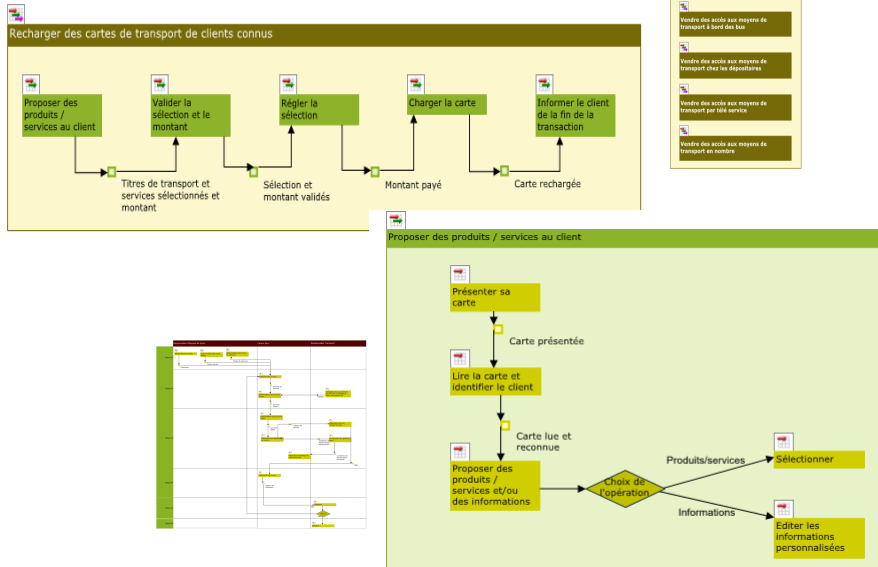
Business Level (Top View)



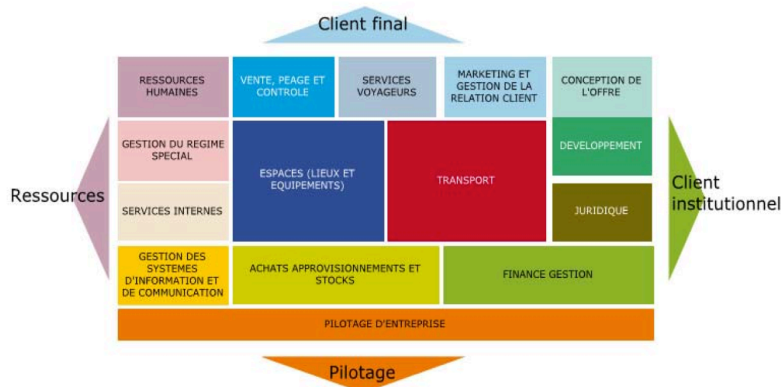
- 232 processes with 23 inputs / outputs
- 364 activities with 149 inputs / outputs
- 915 tasks with 815 inputs / outputs

6

Business Level (Details)

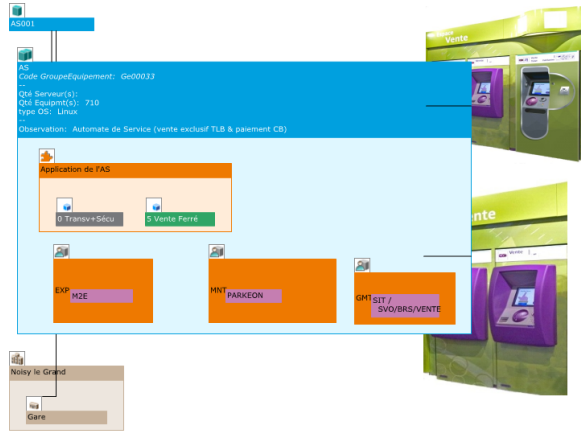


(IT) Functional Level (Top View)



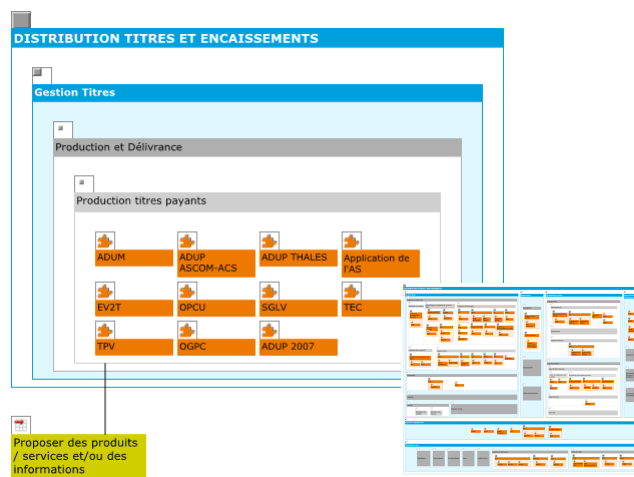
- 15 zones
- 107 districts
- 445 blocs

Technical Level



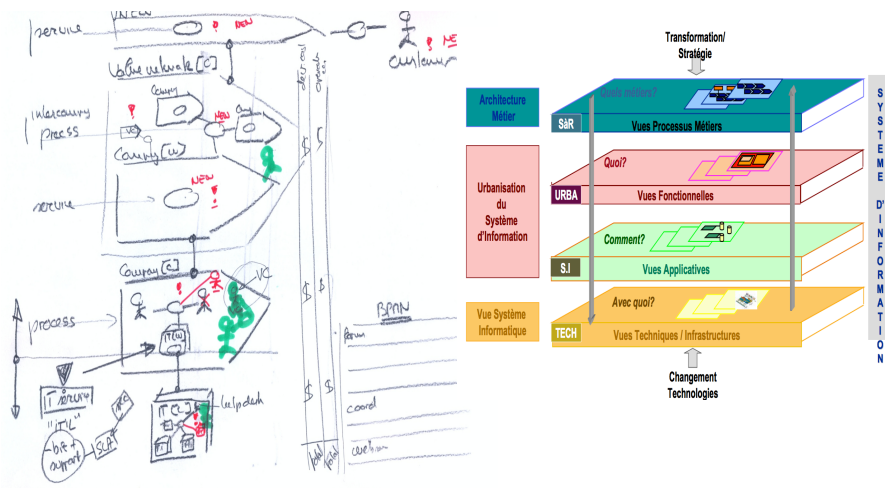
11

Alignment Business / Function / Applications



12

SEAM / URBA Mapping



15

Credits

Marc Demouveau
Urbanisation des systèmes d'information



16