

# URBAN PLANNING IN BAHRAIN

- Bahrain Facts & Figures
- Governorates & Government
- Bahrain NPDS 2030  
National Planning and Development Strategies
- Projects in Progress
- Action Areas for Future Projects



Photos by SOM or Ch. Storch

# KINGDOM OF BAHRAIN

Total Land Area in km<sup>2</sup> **711**

Total Population **700.000**

Total Employment\* **340.000**

Domestic Output Main Products

Aluminium

Oilfields

Refined Oil

Petrochemicals

Gas



\*Source: EDB Economic Development Board Bahrain 2006

	<b>Bahrain</b>		<b>Stuttgart</b>	
<b>Gross Domestic Product (GDP)</b> (Real GDP Growth Rate 2004)	<b>5,9%</b>		<b>1,0%</b> <sup>1</sup>	
<b>Population Growth</b>	<b>2,6%</b>		<b>0,3%</b>	
<b>Fertility Rate per Woman</b>	<b>3,1</b>		<b>1,2</b>	
<b>Total Land Area in km<sup>2</sup></b>	<b>711</b>		<b>207</b>	
<b>Total Population 2030 / 2025</b>	<b>1.200.000</b>		<b>570.000</b> <sup>2</sup>	
<b>Total Population 2004</b>	<b>700.000</b>		<b>590.000</b>	
<b>under age 15</b>	<b>206.000</b>	<b>29,2%</b>	<b>75.000</b>	<b>12,8%</b>
<b>above age 65</b>	<b>18.000</b>	<b>2,5%</b>	<b>105.000</b>	<b>17,8%</b>
<b>Foreign National</b>	<b>270.000</b>	<b>38,0%</b>	<b>140.000</b>	<b>23,7%</b>

<sup>1</sup> Germany - FAZ v. 12.01.2006

<sup>2</sup> Stat. Landesamt Ba-Wü

	<b>Bahrain</b>	<b>Egypt</b>	<b>Jordan</b>	<b>Saudi-Arabia</b>	<b>Syria</b>	<b>UAE</b>
<b>Tourists (overnight visitors)</b>	<b>9,9</b>	<b>19,2</b>	<b>7,9</b>	<b>24,5</b>	<b>9,3</b>	<b>19,6</b>
<b>No. of rooms</b>	<b>2,0</b>	<b>34,9</b>	<b>5,0</b>	<b>20,8</b>	<b>4,3</b>	<b>9,8</b>

Basic Tourism Indicators-Market Share 2003 in %  
Source: WTO-World Tourism Organisation

<b>Europe</b>	<b>5,9</b>	<b>73,1</b>	<b>13,1</b>	<b>4,9</b>	<b>10,4</b>	<b>27,0</b>
<b>Middle East</b>	<b>73,1</b>	<b>16,3</b>	<b>61,2</b>	<b>55,3</b>	<b>74,6</b>	<b>27,0</b>
<b>South Asia</b>	<b>11,4</b>	<b>0,8</b>	<b>1,4</b>	<b>22,5</b>	<b>7,2</b>	<b>15,7</b>

Market Share 2004 in % - Arrivals of Non-Residents on National Borders  
Source: WTO-World Tourism Organisation



# BAHRAIN GOVERNORATES

**Capital**

**Manama**

**Central**

**Isa-Town**

**Muharraq**

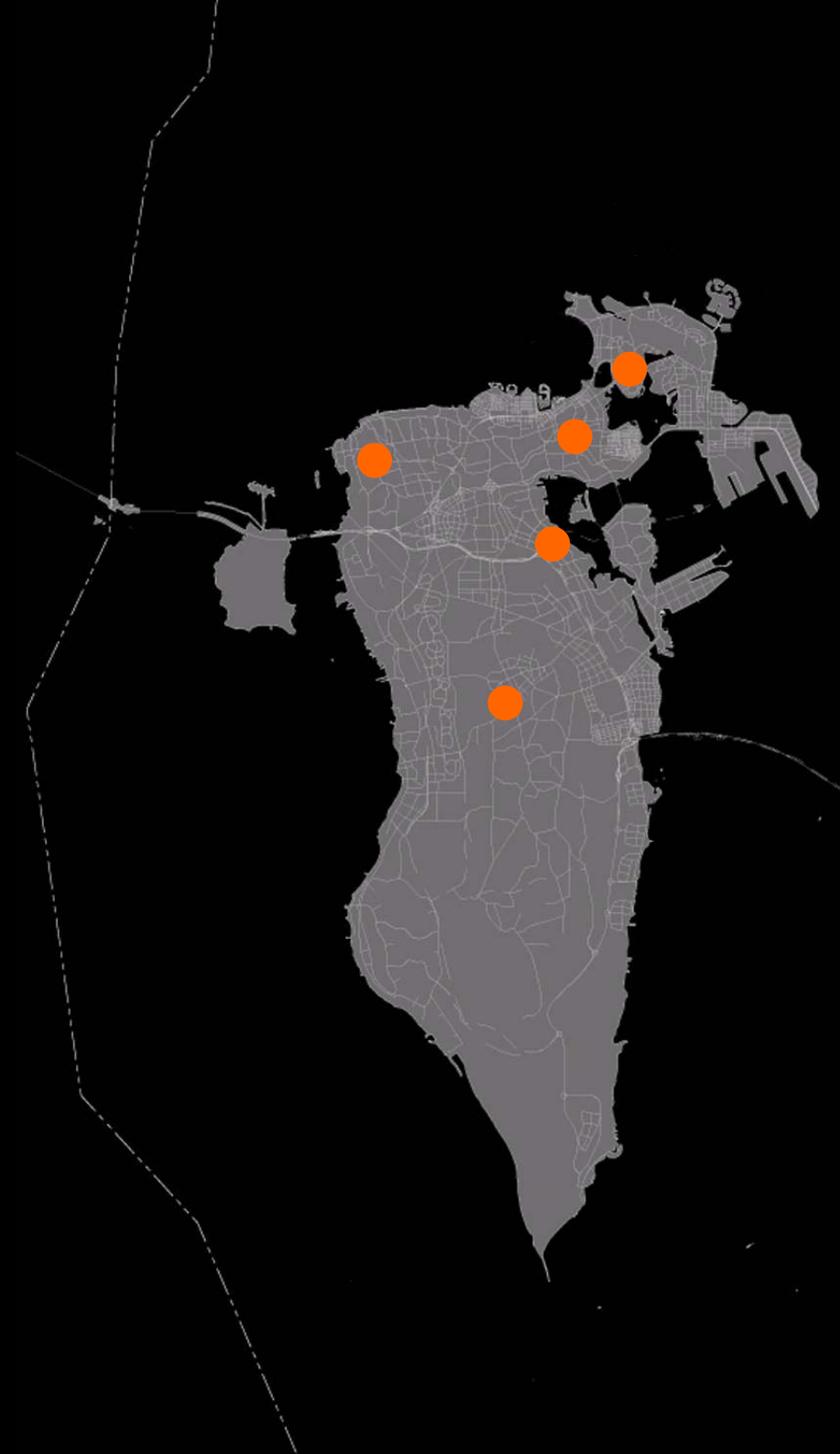
**Muharraq**

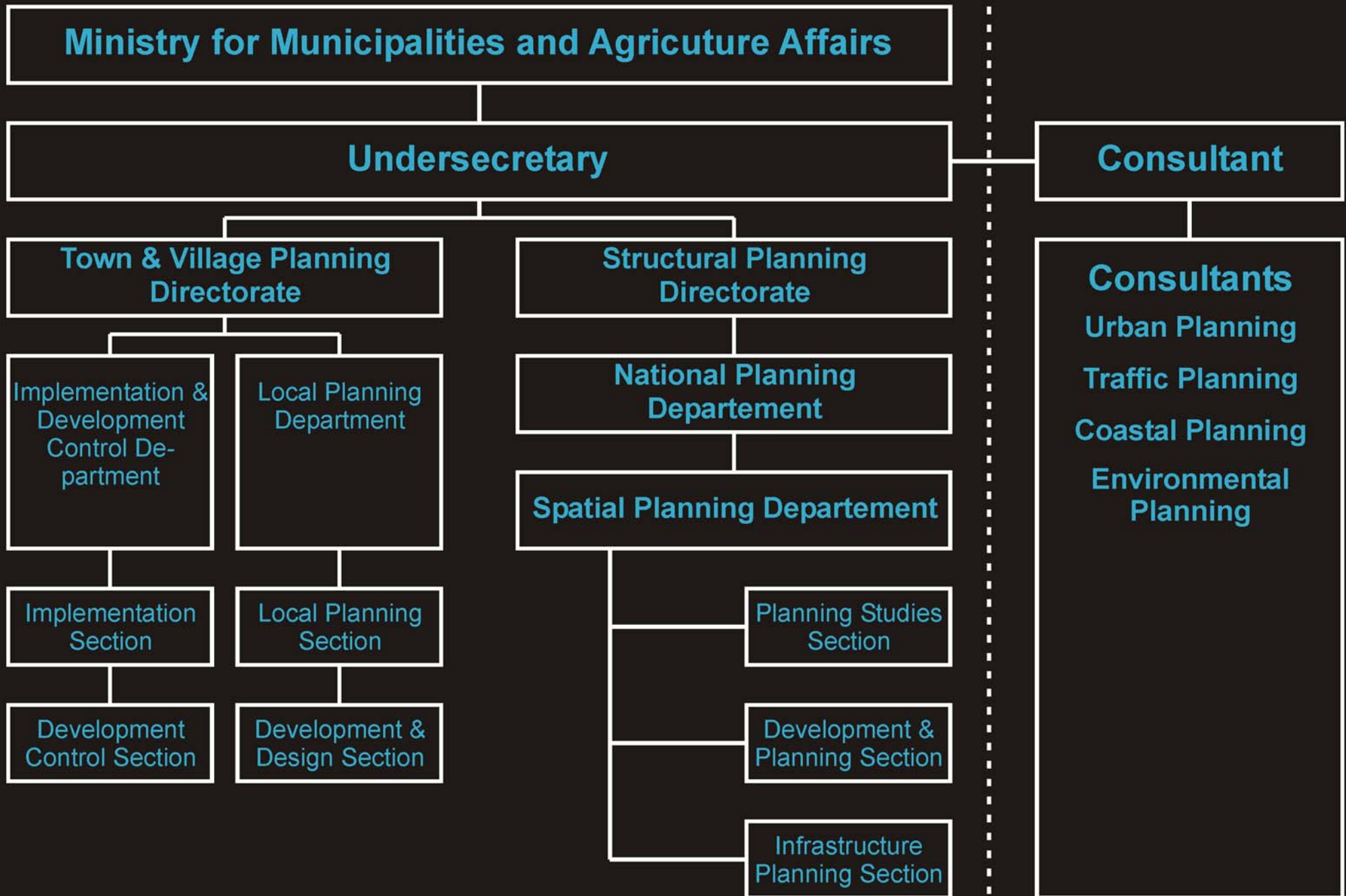
**Northern**

**Budaiya**

**Southern**

**Awali**





# MASTERPLAN BAHRAIN 2030

**Table of Contents**

**Implementation Overview**

**Economic Framework**

**Heritage Management Framework**

**Marine Spatial Plan Framework**

**Terrestrial Environment Framework**

**Transport Framework**

**Sustainability Framework**

# MASTERPLAN BAHRAIN 2030

## Economic Engines of the Future

	Employment		Growth Rate* 2001 - 2005
	2004	2030	
<b>Manufacturing</b>	<b>53.000</b>	<b>134.000</b>	<b>21%</b>
<b>Financial &amp; Business Services</b>	<b>22.000</b>	<b>95.000</b>	<b>25%</b>
<b>Construction</b>	<b>56.000</b>	<b>110.000</b>	<b>42%</b>
<b>Hotels &amp; Restaurants</b>	<b>13.000</b>	<b>34.000</b>	<b>1%</b>

Source: DTZ (July 2006)

\*Commercial Licensing Indicators, Source: EDB Economic Development Board Bahrain 2006



# MASTERPLAN BAHRAIN 2030

## Phase 1

**2006 – 2010** Housing Units 68.000  
Forecast Population 270.000

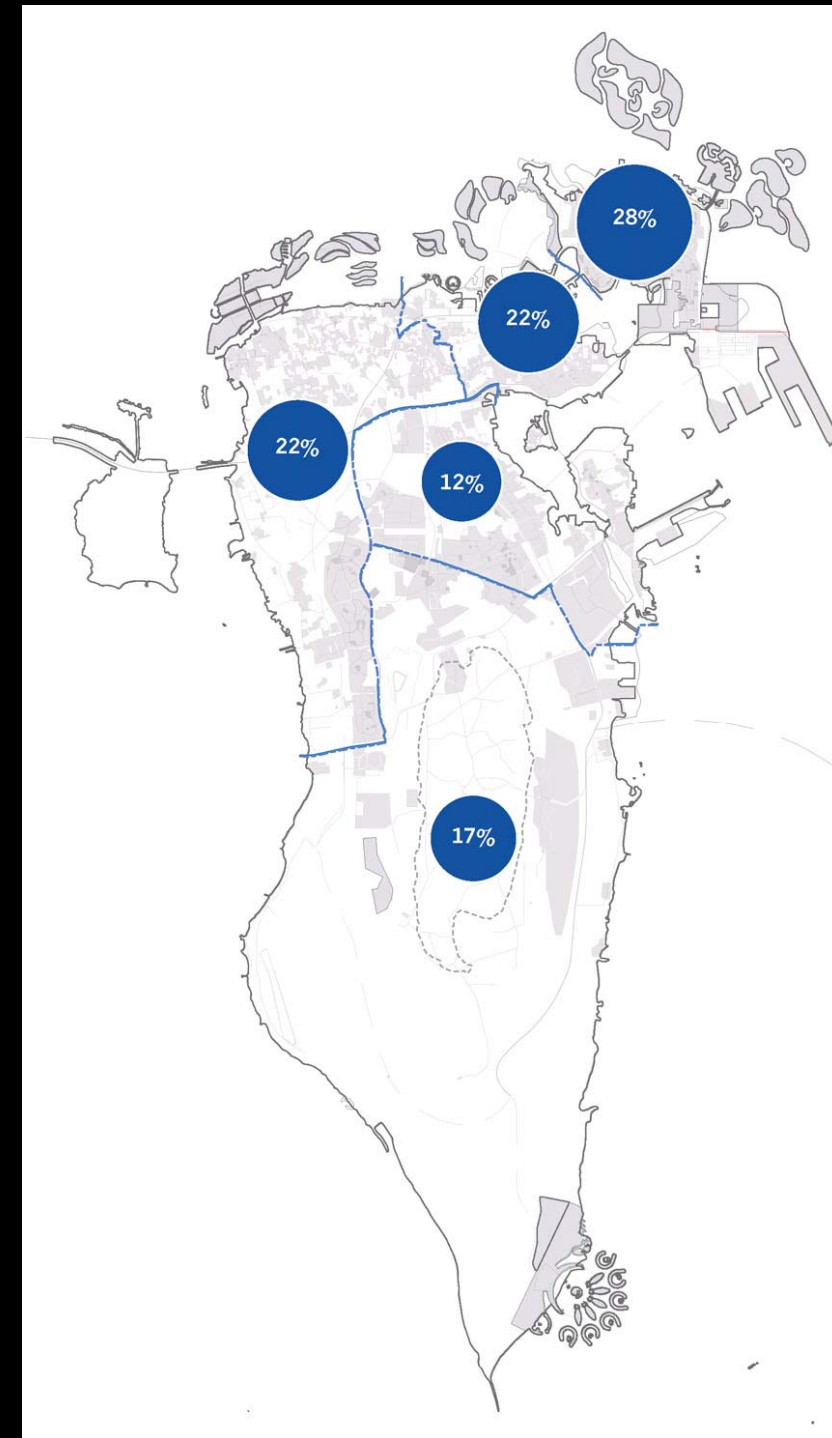
## Phase 2

**2010 – 2020** Housing Units 70.000  
Forecast Population 270.000

## Phase 3

**2020 – 2030** Housing Units 42.000  
Forecast Population 170.000

**Total Housing Units 180.000**  
**Total Population 710.000**



# MASTERPLAN BAHRAIN 2030

## New Development

<b>North Islands</b>	<b>1300ha</b>
<b>Diyaar al Muharraq</b>	<b>250ha</b>
<b>Amwaj Islands &amp; East Hidd</b>	<b>500ha</b>
<b>Industrial Islands</b>	<b>350ha</b>
<b>Durrat al Bahrain</b>	<b>200ha</b>

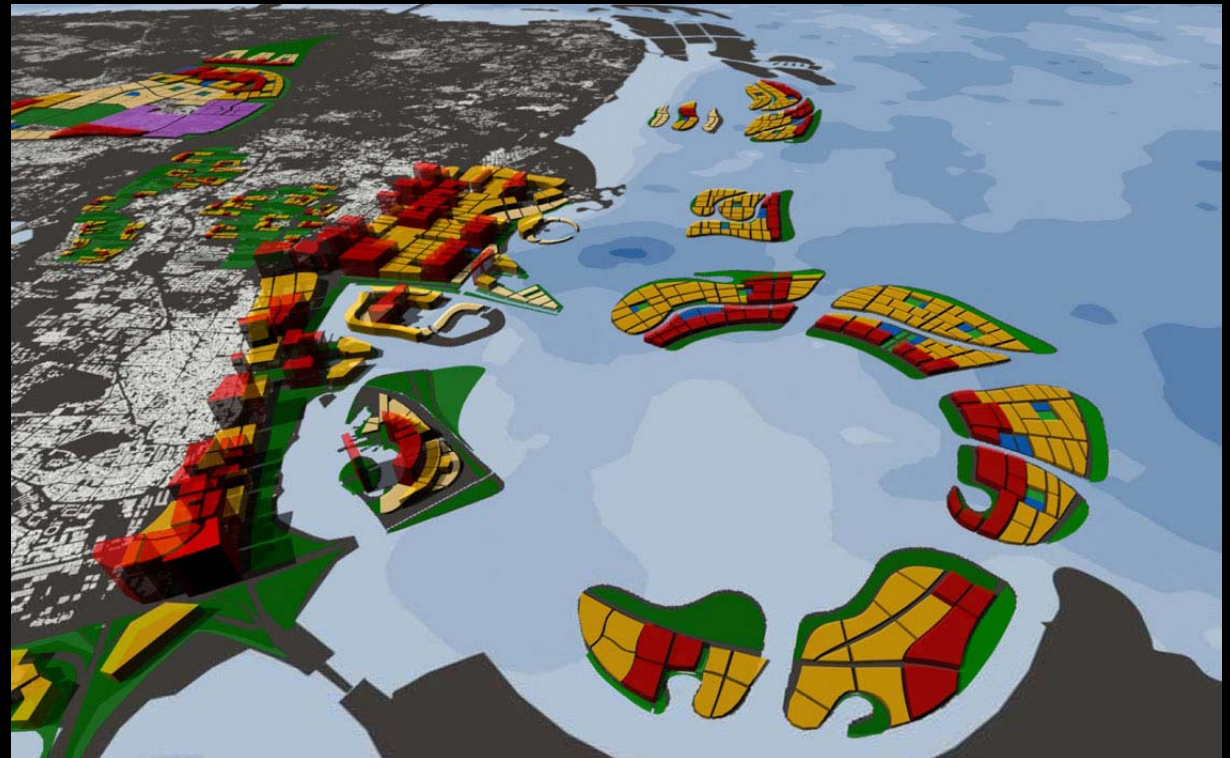


# MASTERPLAN BAHRAIN 2030

## Special Study Areas – North Islands

### Land Use Allocation

- Residential	290ha	17.000du (dwelling units)
- Mixed-Use	115ha	860.000m <sup>2</sup> (commercial & office)
- Public Use	50ha	



# MASTERPLAN BAHRAIN 2030

## Special Study Areas – North Islands

- Bahrain Bay
- Bahrain World Trade Center
- Bahrain Financial Harbour
- Bandar Seef
- Lulu Island

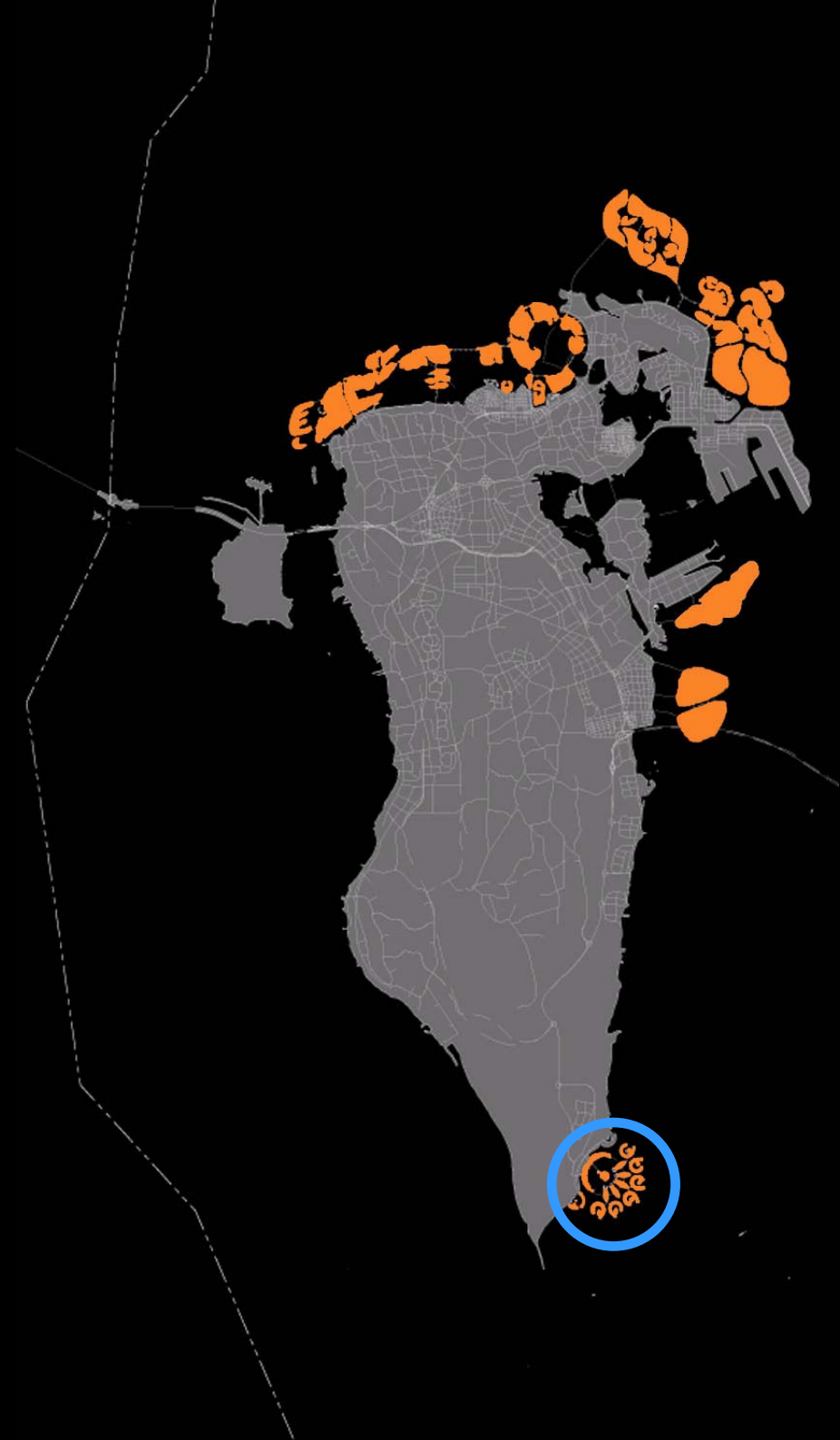




# PROJECTS IN PROGRESS

## Durrat al Bahrain

- 200ha
- 2000 Villas & 3000 Appartements
- plotsize 500m<sup>2</sup> - 1.500m<sup>2</sup>





# ACTION AREAS

World Heritage Area

Bahrain Fort

Saar - Burial Complex

